

# Routing Mail through Zix *Exchange Enterprise 2003*

Modifying Existing Connector .....pg 2  
Creating a NEW Connector .....pg 4

# Routing Mail through Zix Encryption

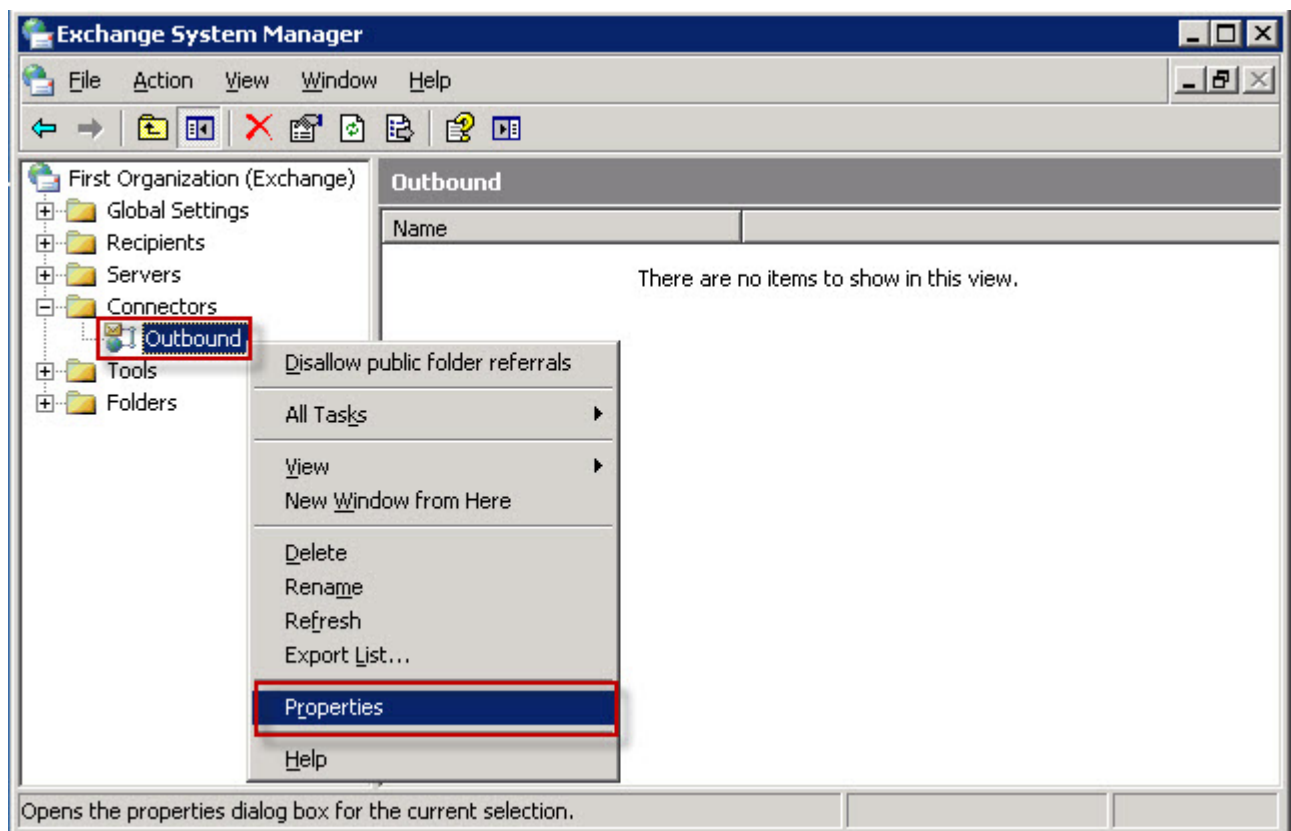
## Exchange Standard Server Version 6.5

Below are the steps to follow to route your mail through your new Zix Encryption Solution. These steps are based off an Exchange Enterprise Server version 6.5.

\*Please note that once this process is completed, your server will be sending messages through Zix Encryption servers. Once this happens your messages will be encrypted based on the policies you have previously chosen.

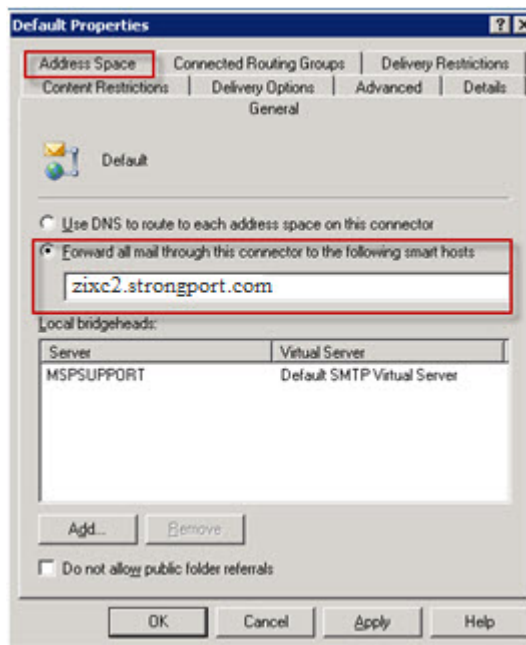
### Modifying an Existing Connector

1. Click Start, then Programs, Microsoft Exchange, System Manager
2. Expand your Connectors Folder, Right click on your connector and select properties. See below for an example

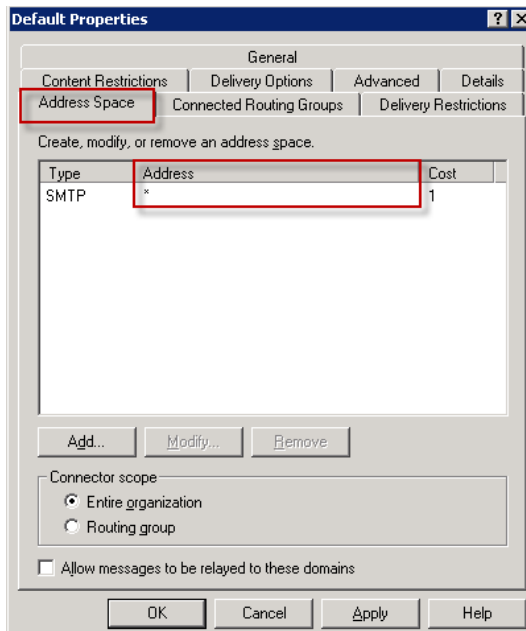


1. On the General Tab, Select the radio button for '**Forward all mail through the following smart hosts**'
2. Type: **zixc2.strongport.com**

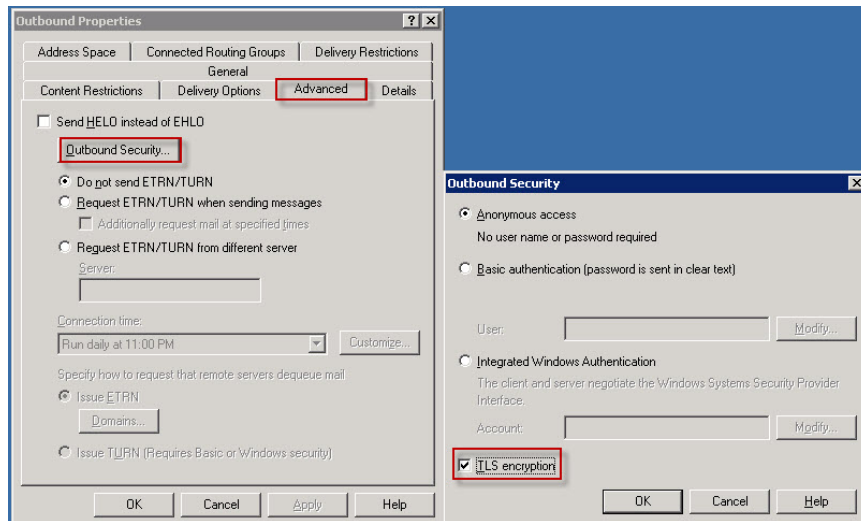
3. Click on the **'Address Space'** Tab. See below for an example.



4. Make sure that in the middle box of this window, the **'Address'** Field contains **'\*'**. This means **ALL** traffic outbound. See below for example.



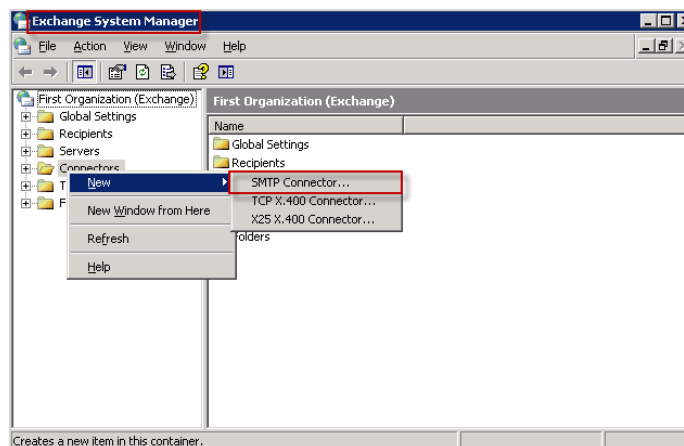
5. If you have a cert installed, you may continue with these instructions; if you do not have a cert, please follow the guide in your welcome message to set up your cert before continuing.
6. Next, click the advanced tab, and then click outbound security.
7. In the outbound security window you should have a TLS encryption check box. Enable this option. See below for example.



8. Click '**Apply**' then '**OK**' to apply our changes.
9. Restart your '**Simple Mail Transfer Protocol**' service.
10. Your server should now be sending mail through the Zix Encryption Servers and encrypting messages.

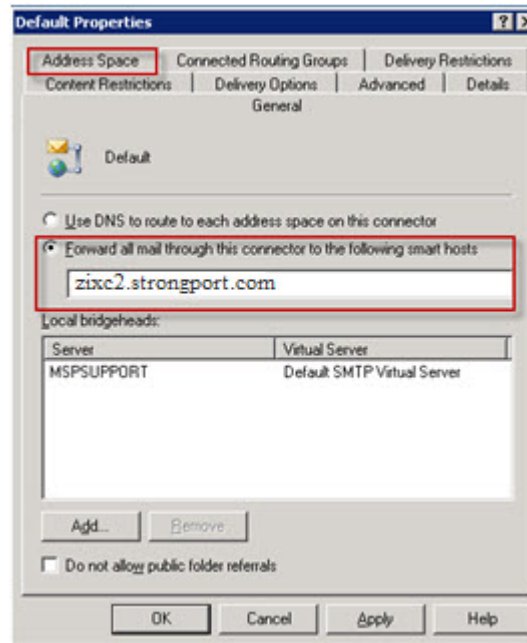
## Creating a NEW Connector

1. Click Start, then Programs, Microsoft Exchange, System Manager.
2. **Right click** on Connectors and select New-> **SMTP Connector**. See example below.

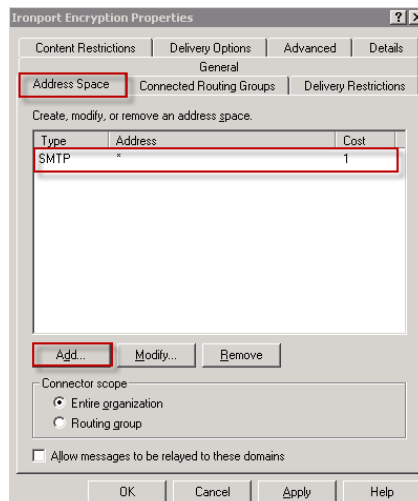


3. Name the connector "**IronPort Encryption**".
4. Select the radio button for option "**Forward all mail through this connector to the following smart hosts**".
  - a. Enter: ***zixc2.strongport.com*** as the Smarthost.

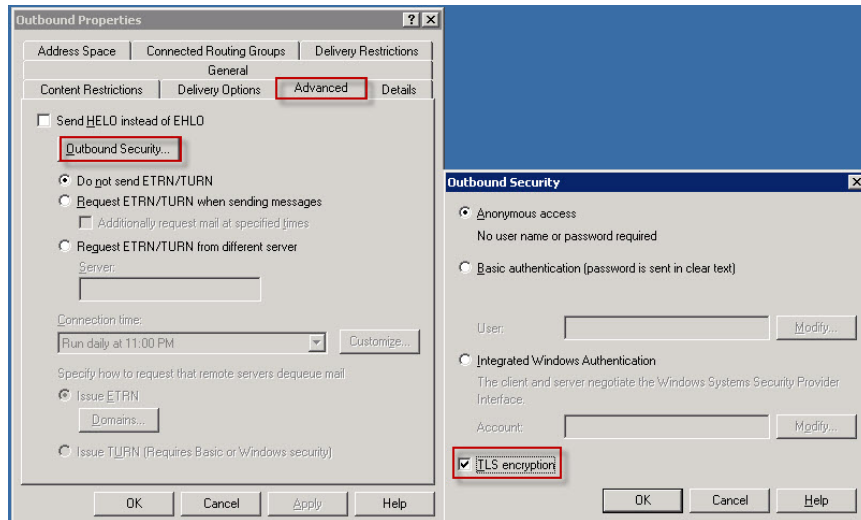
5. Click the **"Add..."** button at the bottom of this window and **select your server** from the list. See below for a screenshot example of what steps 4-6 should look like.



6. Next you're going to **click** the **"address space"** tab at the top.
7. Click the **"Add"** button on this tab.
8. Select **"SMTP"**.
9. Email Domain should be **\***.
10. Cost should be **1 (or the lowest if you have multiple connectors)**, click **OK**.
11. Below is a screen of what you should be looking at after steps 8-13 are completed.



12. In the outbound security window you should have a TLS encryption check box. Enable this option. See below for example.



13. Click '**Apply**' then '**OK**' to apply our changes.

14. Restart your **Simple Mail Transfer Protocol** Service.

15. All your company's mail **SHOULD** now be flowing outbound through Zix Encryption Servers.