

# Routing Mail through Zix *Exchange 2007 & 2010*

Modify Your Existing Connector .....pg 2

# Routing Mail through Zix Encryption

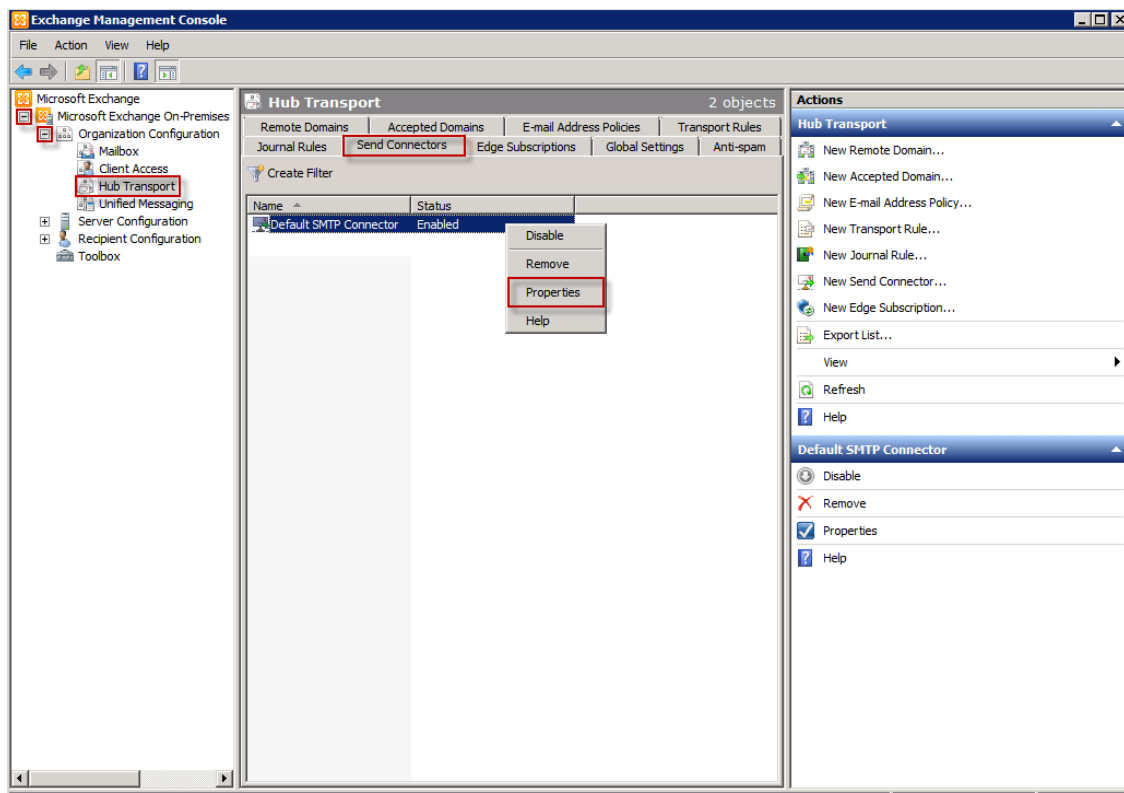
## Exchange 2007 & 2010

Below are the steps to follow to route your mail through your new Zix Encryption Solution. These steps are based off Exchange 2007 & 2010.

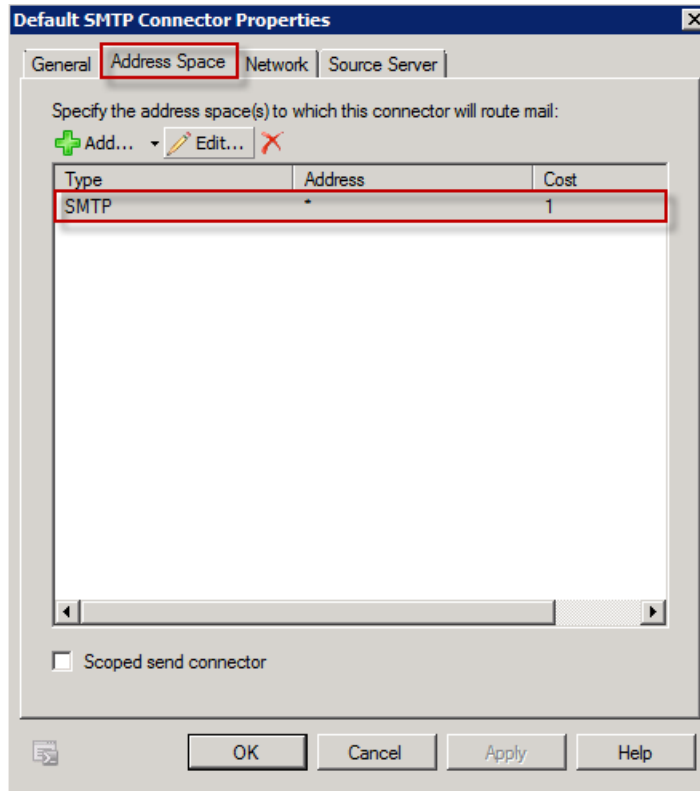
\*Please note that once this process is completed, your server will be sending messages through your new Zix Encryption Solutions servers. Once this happens your messages will be encrypted based on the policies you have previously chosen.

### Modifying an Existing Send Connector

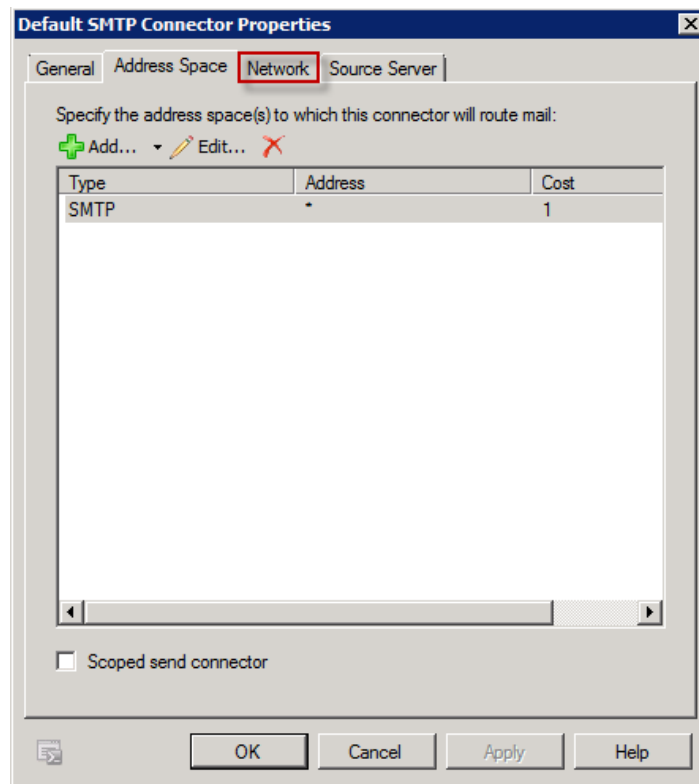
1. Click Start, then All Programs, Microsoft Exchange Server 2007/10, then Exchange Management Console.
2. Click the '+' to the left of the '**Microsoft Exchange On-Premises**' icon.
3. Click the '+' to the left of the '**Organization Management**' icon.
4. Click on '**Hub Transport**'.
5. In the work pane, click the Tab for '**Send Connectors**', then right click and select '**Properties**'.



6. Click the **'Address Space'** tab and ensure it matches the screen shot below.



7. Click the **'Network'** tab.



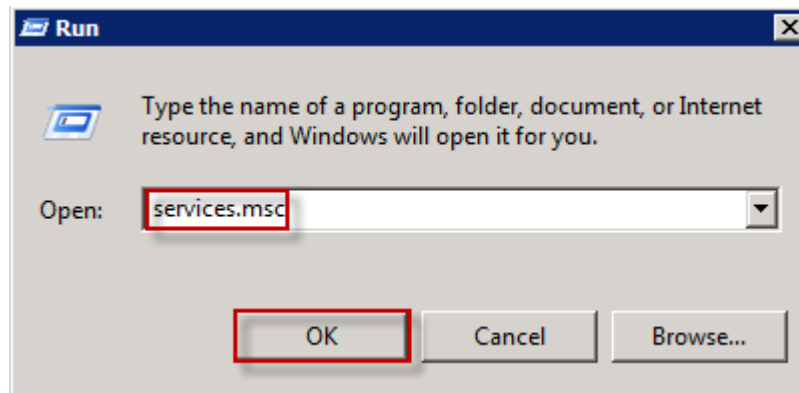
8. Select the radio button for **'Forward all mail through the following smart hosts'**

9. Click **'Add'**

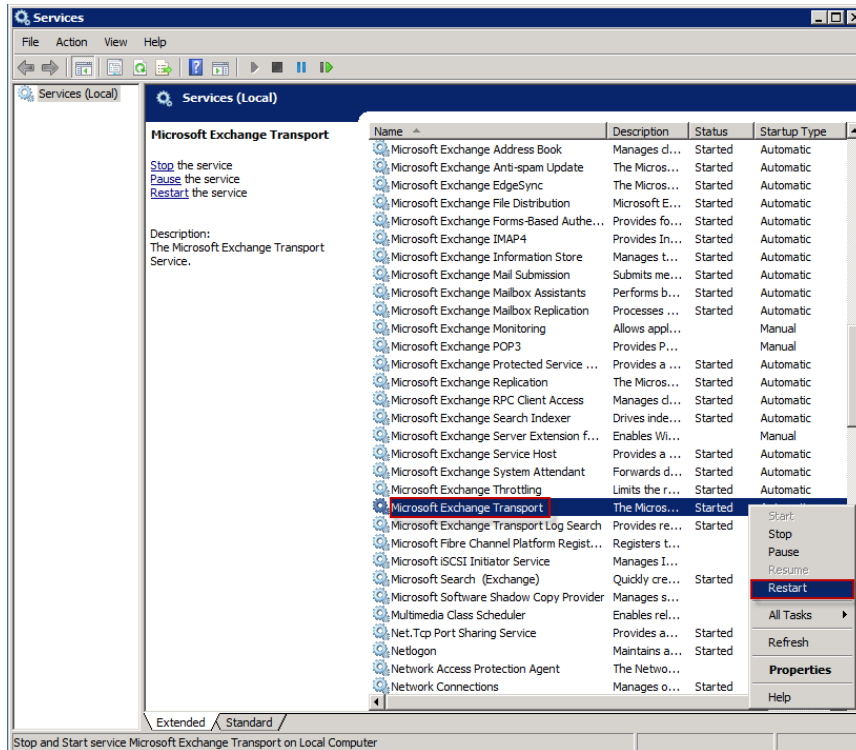
10. Select the radio button for '**Fully qualified domain name (FQDN):**'
  - a. Type: **zixc2.strongport.com**



11. Click '**OK**' twice to submit our changes.
12. **\*NOTE\*** Exchange 2007 and 2010 install with TLS enabled by default. You shouldn't have to make any changes to your server unless you have customized security settings.
13. We should now restart the Transport Service. Go to **Start** then **Run**.
14. In the open field:
  - a. Type: **services.msc**
  - b. Click **OK**



15. Right Click on the '**Microsoft Exchange Transport**' service and select '**Restart**'.



16. All your company's mail SHOULD now be flowing outbound through Zix Encryption Servers.